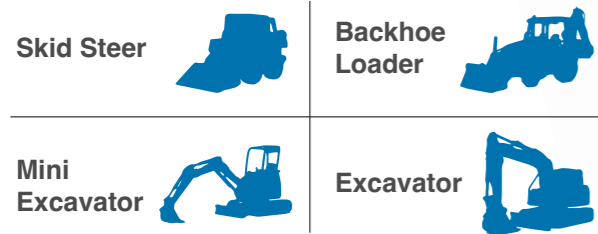
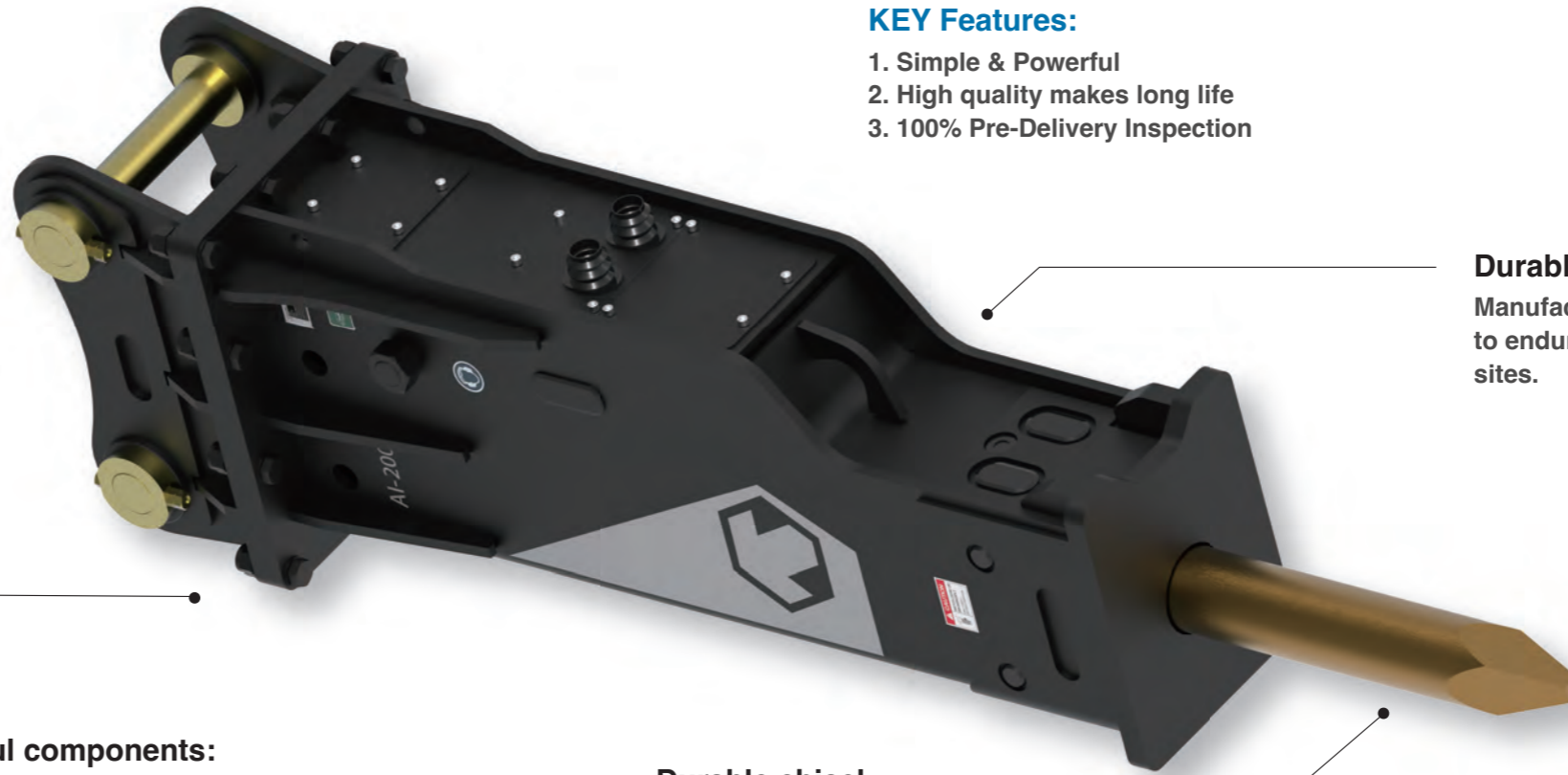


AI series HYDRAULIC BREAKERS



Provide top-tier performance across all job sites_ quarries, mining operations, general construction, and demolition projects.



KEY Features:

1. Simple & Powerful
2. High quality makes long life
3. 100% Pre-Delivery Inspection

Durable BOX type bracket:
Manufactured under strict quality control to endure any tough circumstances of job sites.

Powerful components:

- *Upmost Heat-treated Main body.
 - *Enlarged size of Side rod and ACC.
 - *High quality dampers and pads
- Ensure phenomenal performance and present distinctly higher level of reliability.

Durable chisel:

Selected special high-quality material and strict quality control present outstanding performance and durability.



◆ Specifications

		AI-15	AI-40	AI-65	AI-80	AI-150	AI-180	AI-190	AI-200	AI-300	AI-350	AI-450	AI-550
Working Pressure	MPa	9 - 12	9 - 12	11 - 14	12 - 15	15 - 17	15 - 17	16 - 18	16 - 18	16 - 18	16 - 18	16 - 18	16 - 18
Required Oil Flow For Breaker	L/min	15 - 30	23 - 70	30 - 65	35 - 75	65 - 100	90 - 120	97 - 139	97 - 139	150 - 210	180 - 240	200 - 260	210 - 290
Frequency	bpm	800 - 1400	600 - 1000	500 - 900	400 - 800	350 - 700	350 - 650	350 - 600	350 - 500	300 - 450	300 - 450	250 - 400	200 - 350
Operating Weight	kg	119	192	342	435	894	1225	1624	1810	2357	2428	3100	3661
Overall Length	mm	1247	1363	1558	1850	2235	2665	2737	2849	3035	3273	3372	3617
Chisel Dia.	mm	40	53	68	75	100	125	135	140	150	155	165	175
Suitable Carrier Machine	Ton	0.8 - 2	2.5 - 4	4 - 6.5	6 - 9	10 - 15	15 - 18	16 - 21	18 - 26	25 - 30	28 - 35	30 - 45	40 - 55
Carrier Output Flow Range	lpm	15 - 42	30 - 70	35 - 70	10 - 110	80 - 140	100 - 150	120 - 200	120 - 200	208 - 290	220 - 315	250 - 340	280 - 360

(Note) The above specifications are subject to change without notice.
The above specifications assume the use of an OKADA universal pin mount.