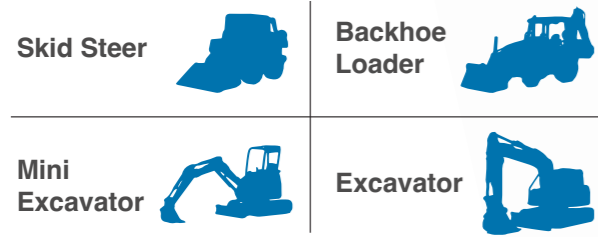
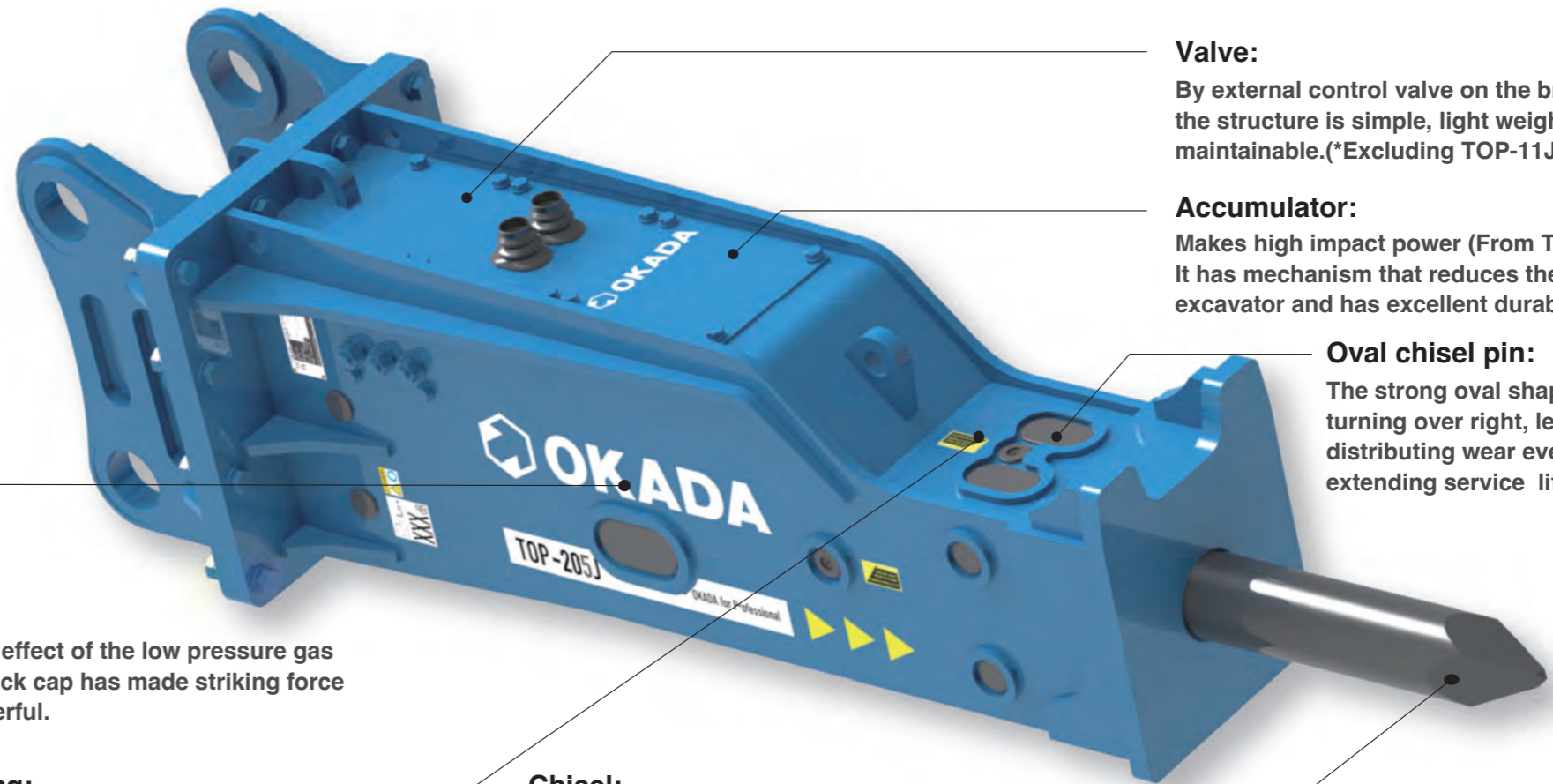


TOP-J series HYDRAULIC BREAKERS



Premium quality equals longer lifetime of breaker and carrier machine. Power, reliability and high-efficiency. Performance tests carried-out on all units at the factory.



Valve:

By external control valve on the breaker body, the structure is simple, light weight, and highly maintainable. (*Excluding TOP-11J~32J)

Accumulator:

Makes high impact power (From TOP-205J~) It has mechanism that reduces the burden on the excavator and has excellent durability.

Oval chisel pin:

The strong oval shape allows turning over right, left, up and down, distributing wear evenly and extending service life.

Piston:

The cushioning effect of the low pressure gas sealed in the Back cap has made striking force even more powerful.

Shank bushing:

Extended length provides a larger bearing surface and minimizes wear.

Chisel:

Selected special high quality steel and the most advanced heat treatment available anywhere ensure outstanding wear and shock resistances.



◆ Specifications

		TOP-11J	TOP-18J	TOP-22J	TOP-32J	TOP-43J	TOP-60J	TOP-100J	TOP-205J	TOP-300J	TOP-350J	TOP-400J	TOP-800J	TOP-1000J
Working Pressure	MPa	9 - 12	9 - 12	9 - 12	11 - 16	11 - 16	11 - 16	14 - 18	15 - 18	16 - 18	16 - 18	16 - 18	16 - 20	18 - 21
Required Oil Flow For Breaker	L/min	15 - 30	20 - 40	20 - 50	35 - 50	35 - 55	48 - 70	70 - 110	110 - 135	160 - 190	200 - 240	220 - 280	320 - 420	380 - 450
Frequency	bpm	800 - 1400	700 - 1200	600 - 1100	850 - 1150	600 - 850	740 - 950	550 - 1000	360 - 560	370 - 530	300 - 350	250 - 320	220 - 300	200 - 280
Operating Weight	kg	100	140	180	260	340	460	880	1800	2670	2900	4120	6150	7150
Overall Length	mm	1150	1270	1450	1438	1654	1739	2192	2726	3050	3354	3802	4271	4500
Chisel Dia.	mm	40	45	53	61	68	74	105	135	150	155	170	190	210
Suitable Carrier Machine	Ton	0.5 - 2.0	0.8 - 2.5	1.3 - 3.5	2.5 - 4.5	4.0 - 6.5	5.0 - 8.5	9.0 - 15	18 - 26	24 - 36	28 - 45	40 - 60	60 - 80	75 - 120
Carrier Output Flow Range	lpm	20 - 36	26 - 48	26 - 60	45 - 60	50 - 65	65 - 90	105 - 140	160 - 200	220 - 280	280 - 310	310 - 360	380 - 480	420 - 500

(Note) The above specifications are subject to change without notice. The above specifications assume the use of an OKADA universal pin mount.